

# ParrottCreek

CHILD & FAMILY SERVICES

A photograph of four children on a wooden playground structure. A girl in the center is smiling at the camera, while others are looking in different directions. The background is a soft-focus outdoor setting with trees.

**UPLIFTING  
LIVES.  
CREATING  
FUTURES.**

**ANNUAL REPORT  
2020-2021**

FROM THE EXECUTIVE DIRECTOR

# UPLIFTING LIVES. CREATING FUTURES.

2021 was a conundrum: it was filled with uncertainty and inordinate challenges (financial stress, staffing shortages, client barriers, etc.), yet our programs and services continued uninterrupted while adapting to meet ever-changing community needs. We were fortunate to secure grants from federal, state and private funders that helped stabilize our operations and better serve children and families as their past traumas were compounded and new hardships experienced. Communities struggled with repeated lock-downs, economic and housing insecurities, and the children, youth and families we serve were even harder to reach. Referral processes continued to be disrupted, external treatment services ran at reduced capacity, and the next steps we typically support our participants to take were, often, even further out of reach.

None of this was easy for our staff, and I am proud of how versatile they were, how our partnerships in the community were strengthened, and how our focus always remained on putting our participants at the forefront of every decision.

Looking forward, we continue to focus on uplifting lives and creating better futures locally and across Oregon. Our vision remains firmly on becoming a regional center of excellence as we develop new residential programs, diversify our outpatient services, deepen our cultural understanding and engagement with BIPOC and LGBTQI+ communities, and honor the Native American heritage of the land where we work.

Last year we were all stronger together. This year we believe in making things even better because "good enough" is just not acceptable to us.

A stylized, handwritten signature in white ink, appearing to read "Simon Fulford", is positioned above a horizontal line. The background of the entire page features a blue gradient with white wavy lines at the bottom, and a green gradient at the very bottom.

Simon Fulford  
EXECUTIVE DIRECTOR

## OUR VISION

# HELPING CHILDREN, YOUTH & FAMILIES.

Parrott Creek's history is a wonderful story of local vision and true community commitment. We were founded in 1968 through a citizen-approved bond levy that purchased a farm house and 80 acres of soul-reviving woodland. We then launched a small "ranch" program to help kids get away from negative influences and avoid incarceration. Over the years we have grown into a robust organization providing a diverse array of services - from early interventions and community support through to outpatient treatment and intensive residential programs.

Our community of donors, friends and local, state and federal partners continue to support our vision to become a regional center of excellence in service to children, youth and families. Together we can ensure they reach their full potential.

**Interested in learning more about Parrott Creek, donating, or becoming a volunteer?**  
**Please contact Simon Fulford, Executive Director, at [sfulford@pcreek.org](mailto:sfulford@pcreek.org) or 503-722-4110.**



[PCreek.org](https://www.pcreek.org)



@ParrottCreek

503.722.4110 | 1001 Molalla Ave | Ste. 209 | Oregon City | OR 97045

# Parrott Creek

CHILD & FAMILY SERVICES

## BY THE NUMBERS.

### OUR PROGRAMS

**77 Youth:** **Lifeguards** provides assessment and outpatient treatment services for adolescents who exhibit sexually inappropriate behavior, with **a 100% success rate over this last year!**



**160 Engaged in Services, 20 Parents and 38 Children Housed:**

The **Children & Mother's Program** provides a continuum of care that combines STAR outreach support with transition into safe and stable housing, including access to recovery homes and scattered-site apartments for homeless mothers through the Home Safe Program.

**5 Young Adults:** **Molalla House** is a five bed independent living program in Oregon City supporting youth aging out of foster care and who could benefit from ongoing nurturing support. (see program spotlight)





**46 Youth:** Residential Care **"The Ranch"** helps boys involved in the juvenile justice system understand the impacts of their behaviors, learn personal regulation and develop the life skills needed to succeed in school, at home, and in society.

**This program has an 88% success rate.**



## Mission

Parrott Creek helps children and families identify strengths and develop skills that build stronger families and safer communities.

## Vision

We seek to become a regional center of excellence in service to children, youth and families.



**3 Youth:** **New Era House** provides residential treatment for foster youth, with an emphasis on serving highly traumatized youth, those with high Adverse Childhood Experiences, and youth whose trauma experiences make them hard to place in family settings.

Enrichment activities, family engagement, our on-site school, and access to our 80 acre natural woodland are key elements that nurtures our youths' success in these programs. **88% of youth stay out of the juvenile justice system following treatment.**

## PROGRAM SPOTLIGHT:

# MOLALLA HOUSE, INDEPENDENT LIVING PROGRAM.

Matt entered the child welfare system as a teenager after an altercation resulted in removal from his home and an initial placement in True Housing's residential care. Though he successfully completed the program, growing into a young adult in the foster care system left him with few options once he turned 18.

Thankfully we have Molalla House for young men like Matt. Our independent living program provided Matt a place to call home while he developed life skills like cooking, budgeting, and taking care of himself. Over the course of a few months, Matt opened a bank account and found a great job in a field he is passionate about: hand-made tools. Now he is flourishing with the balance of independence and support provided by his case worker: "He is one of the kindest people I know and I've seen him come a long way. He is self-motivated and so supportive of the other young men entering the program. He rises to the occasion at each and every opportunity." Matt is currently working towards his new goal of finishing driving school and getting his license.

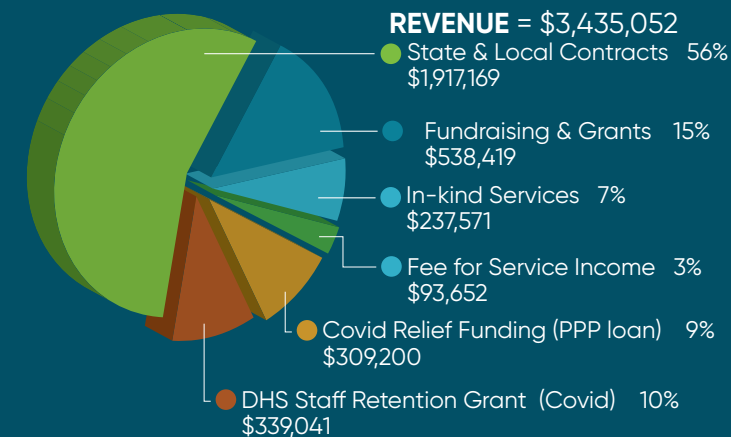
Molalla House serves youth aging out of foster care, like Matt, with 24 hour staff support, specialized case management, independent living skills, and the security of a stable home environment. Together with each youth, we focus on developing a solid plan for their future - and we look forward to impacting even more futures! This program, along with our Youth Homelessness Demonstration Project, inspired the creation of a new role- our BIPOC Housing Navigator. This position will provide integrated case planning and systems alignment through housing and support services with culturally specific partners, and with an emphasis on removing barriers for traditionally underserved community members.

We are proud of Matt and all of the children, youth, and families we serve. These individuals bring to life one of our core values: at Parrott Creek, we believe our children and families are smart, capable and doing the best they can with the resources they have available to them. Our job is to help them reach their full potential.

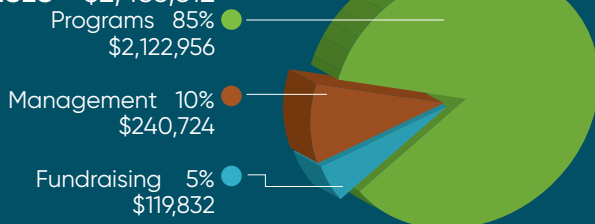
2020–2021

# FINANCIAL REPORT.

Year Ending June 30, 2021\*



**EXPENSES = \$2,483,512**



## BOARD OF DIRECTORS.

Glenn Wachter, Chair

ASSISTANT VICE PRESIDENT,  
PROVIDENCE ST. JOSEPH HEALTH  
CHIEF EXECUTIVE, CREDENA HEALTH, LLC

John D. Wentworth, Past Chair

DISTRICT ATTORNEY,  
CLACKAMAS COUNTY

Donna E. Bane, Past Chair

NON-PROFIT CONSULTANT

Kurt Ruttum, Secretary

ATTORNEY, TONKONTORP

Ed Gronke, Treasurer

RETIRED

Honorable Ulanda Watkins

CLACKAMAS COUNTY CIRCUIT COURT JUDGE

Destry Stoner

DEPUTY DIRECTOR, CODA

Elissa Looney

SENIOR STRATEGIC INITIATIVES MANAGER,  
PERLO CONSTRUCTION

Angela Sheehan

EXECUTIVE COACH AND LEADERSHIP  
TRANSITION CONSULTANT

Stephen Carroll

TRUE HOUSING BOARD CHAIR

Bob Bauer

OWNER, MILEX-MR TRANSMISSION

William Barnes

EXECUTIVE DIRECTOR, RED IS THE ROAD TO WELLNESS

\* Parrott Creek is a 501 (c) (3) nonprofit organization.  
All information is based on audited financial statements  
which can be obtained by contacting Parrott Creek.